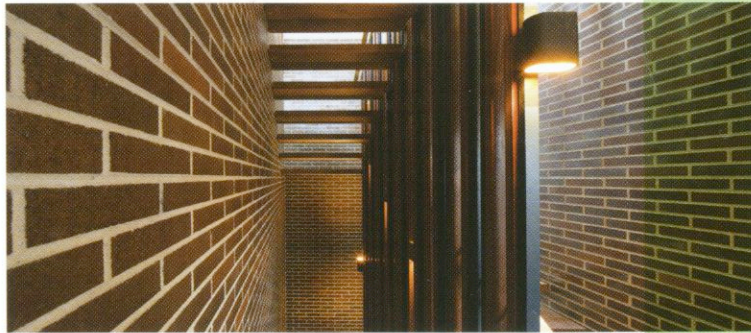




Residential Highly Commended

Elizabeth Bay House



Residential
Highly Commended:
**Design
King**

From the Jury "The brickwork on this project is of the highest quality, and creates a rhythm with other media. It's helped in this regard by the well-matched colours of the brick and timber elements."

Nestled into a long and narrow harbour-front site in Sydney's Elizabeth Bay, this house is connected to the streetscape and surrounds, yet private and secluded inside – which is exactly what the owners requested of Design King architects. Their answer is this: a modern, contemporary home that's beautifully crafted from quality materials. Despite being thoroughly contemporary, it also exudes an air of timelessness. While brick is a material of choice for neighbouring houses

throughout Elizabeth Bay, for this project it was chosen to provide the finished structure with thermal mass as well as visual and acoustic privacy, and also because brick will weather and age with dignity in the coming years.

Architect: Design King
Construction contractor: Belvedere Constructions
Masonry contractor: M&M Bricklaying
Brick manufacturer: Austral Bricks
Brick: Gertrudis Brown

designking.com.au

